

Color	Ga.	No.	Connect to	Origin
			TURN SIGNAL SECTION	
Brn	14	951	Emergency Flasher Switch B+	Emergency Flasher Relay
Pur	14	952	Turn Signal Switch Flasher B+	Turn Flasher Relay
Lt.Blu	16	926	Turn Signal Switch	Left Front Turn Signal
Blu	16	925	Turn Signal Switch	Right Front Turn Signal
Ylw	14	949	Turn Signal Switch	Left Rear Turn Signal
Grn	14	948	Turn Signal Switch	Right Rear Turn Signal
Wht	14	918	Turn Signal Switch	Brake Switch
Blk	18	953	Horn Switch	Horn Relay
			WINDSHIELD WASHER SECTION	
Pnk	18	962	Windshield Washer B+	Wiper Switch
Wht	18	961	Windshield Washer	Wiper Switch
			WINDSHIELD WIPER SECTION "A"	
Pnk	18	962	Wiper Switch	Washer Pump
Pur	18	964	Wiper Switch	Wiper Motor
Gry/Wht	18	965	Wiper Switch	Wiper Motor
Blk/Blu	18	966	Wiper Switch	Wiper Motor
Gry	18	930	Wiper Switch Light	Light Switch
			WINDSHIELD WIPER SECTION "B"	
Blk/Blu	18	966	Wiper Motor	Wiper Switch
Gry/Wht	18	965	Wiper Motor	Wiper Switch
Pur	18	964	Wiper Motor	Wiper Switch
Wht	14	963	Wiper Motor B+	Fuse Panel

Table 9-2 Wire Connection Index, 4 of 4

Notes:

- (1) Two-color wire: 2nd color (stripe) may not be intense color. Observe 2-color wires closely.
- (2) This consists of only one large 10-gauge wire. Wire #916 is connected to the original firewall junction block on the passenger side center of the engine.
- (3) From fuse panel to brake switch.
- (4) This wire is cut and spade lugs have been installed so that your existing neutral safety switch circuit can be wired into your harness. The neutral safety switch is located at the base of General Motor's steering column. Do not attempt to defeat your truck's neutral safety switch, please install one.
- (5) These are not striped wires, but two (2) wires bonded together. The white (Wht) wire is Speaker POSITIVE (+) and the black (Blk) wire is Speaker NEGATIVE (-).
- (6) There is no terminal on the end of this wire.
- (7) Wire #947 is a feed wire from a customer installed dash switch, or relay, to the fuel pump. This was not an original wire in the factory harness. Ignition-on power for this circuit would come from wire #960 in the Accessory Section B+ wire group.
- (8) Wire #901 is a feed wire from a customer installed switch or relay to the cooling fan. Ignition-on power for this circuit would come from wire #906 in the Accessory Section B+ wire group.
- (9) Depending on the model year, the A/C compressor power wire #902 from the A/C control switch may have to first be connected to a compressor cycling switch and then connected to the compressor.
- (10) See **Section 8.8.2** for proper hookup of these two (2) #914 Wht wires. This section must be followed exactly for your alternator to charge and your instruments to work properly.

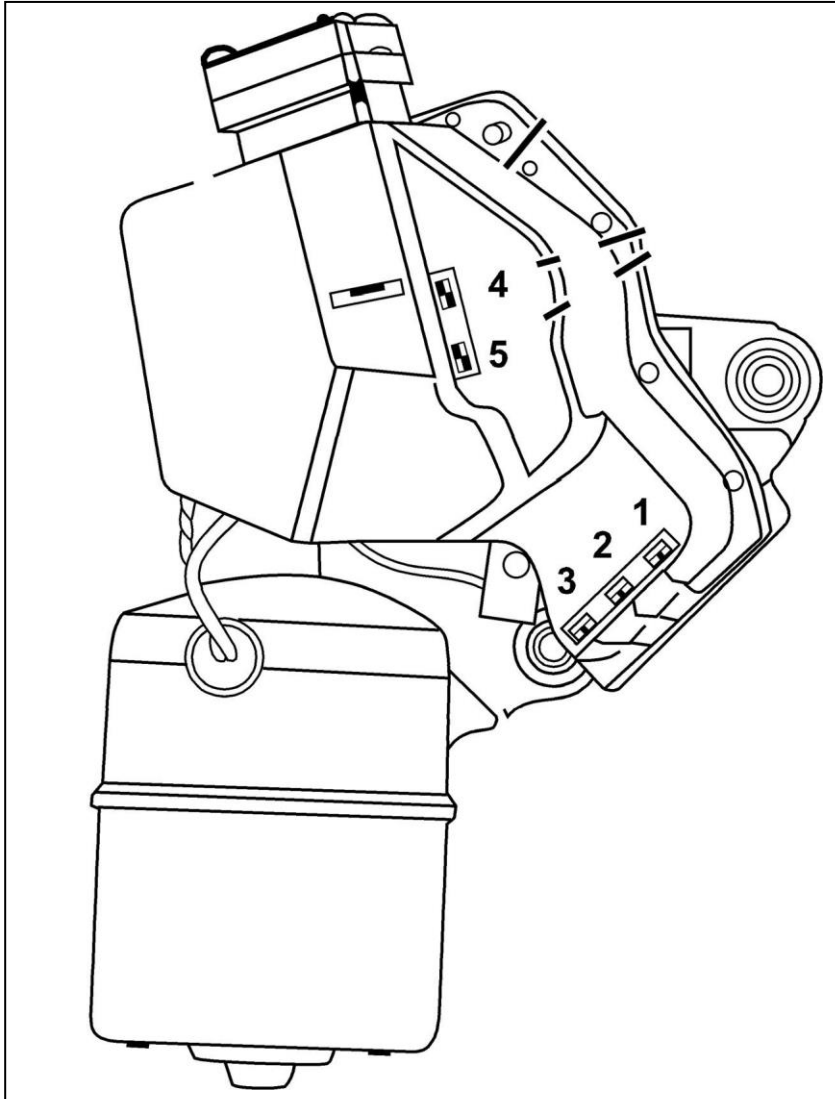


Diagram 2 Wiper Washer Motor & Pump (1973-1978)

- | | | |
|-----------|---|---|
| #1 | - | Blk/Wht |
| #2 | - | Blk/Ylw (Blu #905 attaches here) |
| #3 | - | Blk/Lt.Blu |
| #4 | - | Blk/Blu |
| #5 | - | Blk/Ylw |

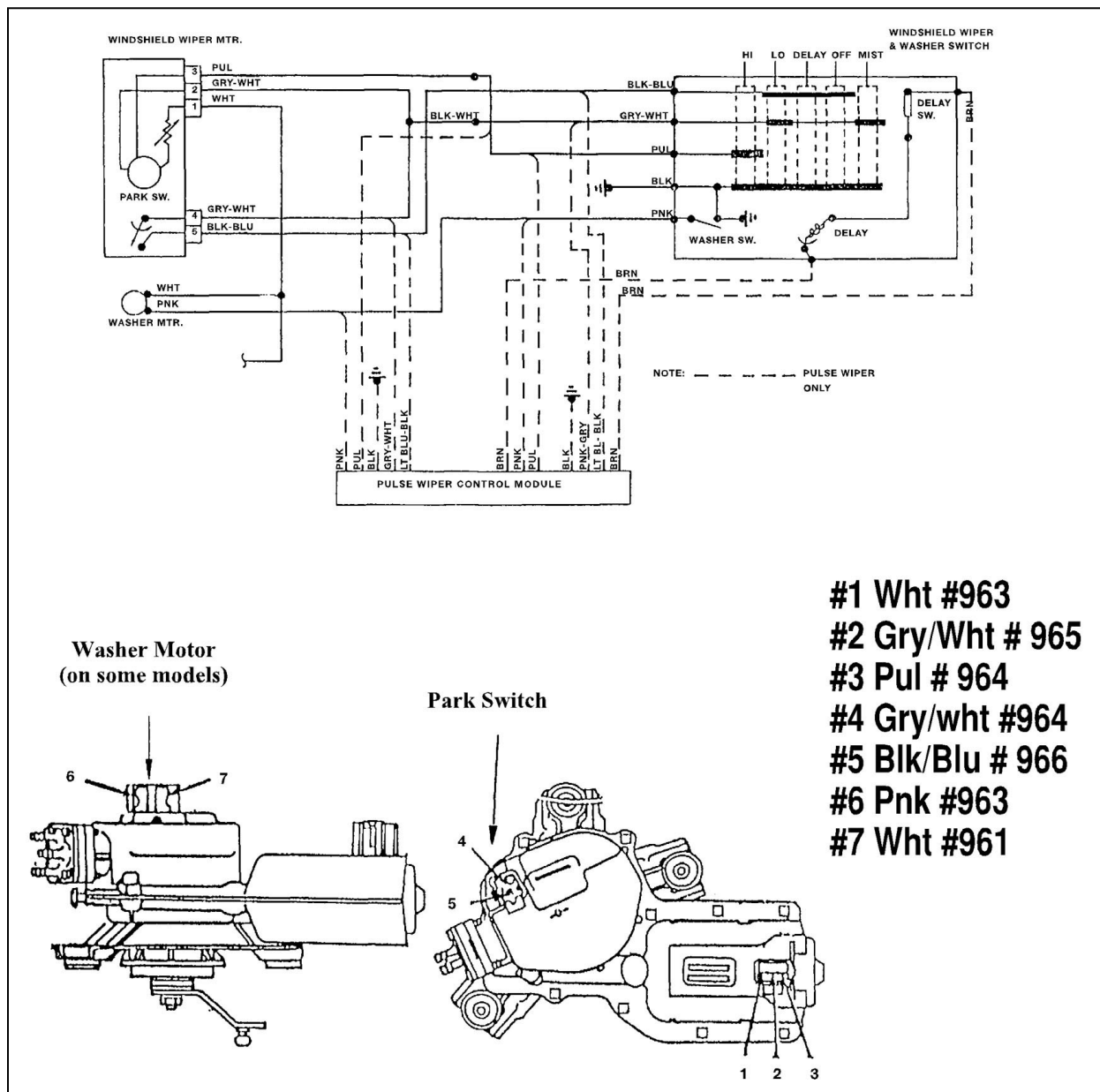


Diagram 4 Wiper Washer System (1978-1986)

Note: Some windshield washer pumps are mounted in the windshield washer reservoir. The reservoir will be located on the driver's side inner fender-well. If this is the case, connect the Pnk and Wht wires at this location.