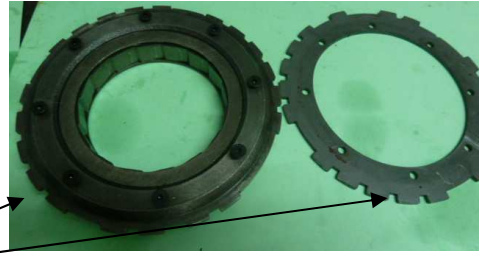




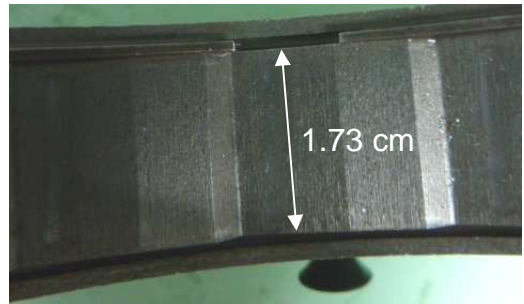
Old cam roller clutch

Old sprag
1.32 cm wide



Case saver/cam roller clutch

Your new sprag
1.32 cm wide
same as mine original



Should be around 1.7 cm to correctly fit in the all width of the innercam, has to be 87-up 4L60 transmission sprag

Place left by old/new Sprag in case saver /cam roller clutch, not acceptable for well function

