

# **#90-335-6A: ENG. NO START AFTER EXTENDED STORAGE (VITON HOSE KIT) - (Aug 15, 1990)**

**Subject: ENGINE NO START AFTER EXTENDED STORAGE**

**Model and Year: 1990 TRUCKS WITH FUEL INJECTION AND 2.5L, 2.8L, 4.3L, 5.0L, 5.7L, 7.4L ENGINE**



**TO: ALL CHEVROLET DEALERS**

Some 1985-90 light trucks equipped with throttle body injection (TBI) engines (see list below) may experience a condition where fuel delivery to the engine is interrupted causing a no start. This condition may be caused by deterioration of the in-tank fuel pump coupler hose located between the sending unit assembly and the fuel pump. The deterioration is caused by prolonged high ambient temperatures in combination with low fuel volumes (or stale fuel) and extended vehicle storage.

Engine Displacement And RPO VIN Identification

2.5 L TBI (LN8) E 2.8 L TBI (LL 2) R 4.3 L TBI (LB4) Z 5.0 L TBI (LO3) H 5.7 L TBI (LO5) K 7.4 L TBI (LI9) N

## **DIAGNOSTIC PROCEDURE:**

See fuel system pressure test (see Figure 1).

## **REPAIR PROCEDURE:**

Vehicles that are diagnosed as exhibiting this condition may be repaired by replacing the original coupler hose (see Figure 2) with a new Viton coupler hose kit, P/N 25028041. The kit consists of a new Viton hose and two clamps.

Parts are currently available from GMSPO.

## **WARRANTY INFORMATION**

For vehicles repaired under warranty use:

Labor Operation: J5590

Refer to the labor time guide for applicable labor times for various models.

[Figure 1](#)

## FUEL SYSTEM PRESSURE TEST ALL ENGINES

SEE DIAGNOSTIC AIDS BEFORE BEGINNING

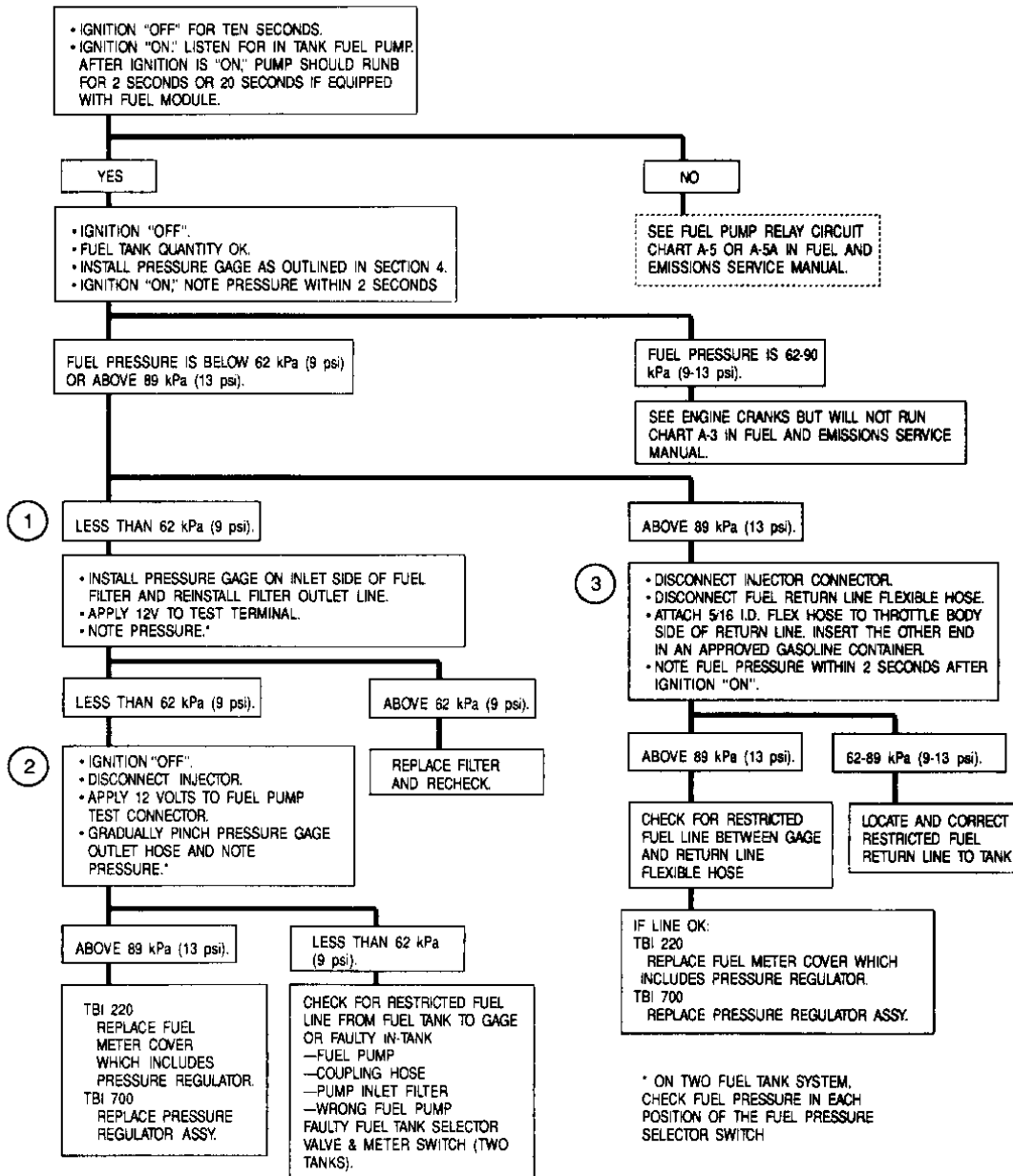


FIGURE 1

Figure 2

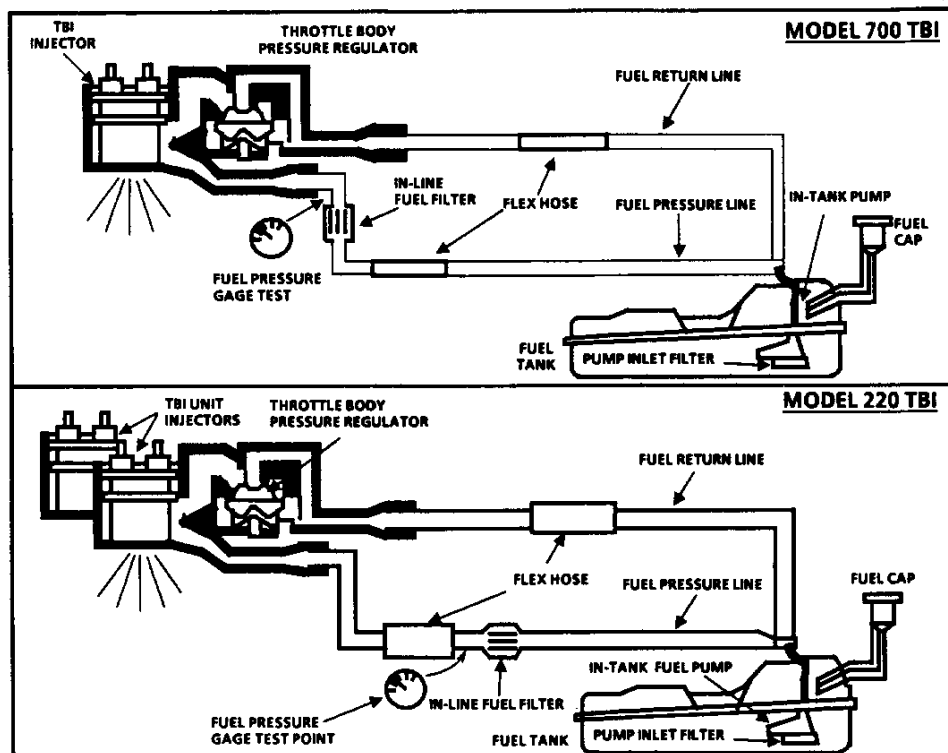


Figure 3

## TYPICAL PUMP & SENDER VERTICAL INSTALLATION

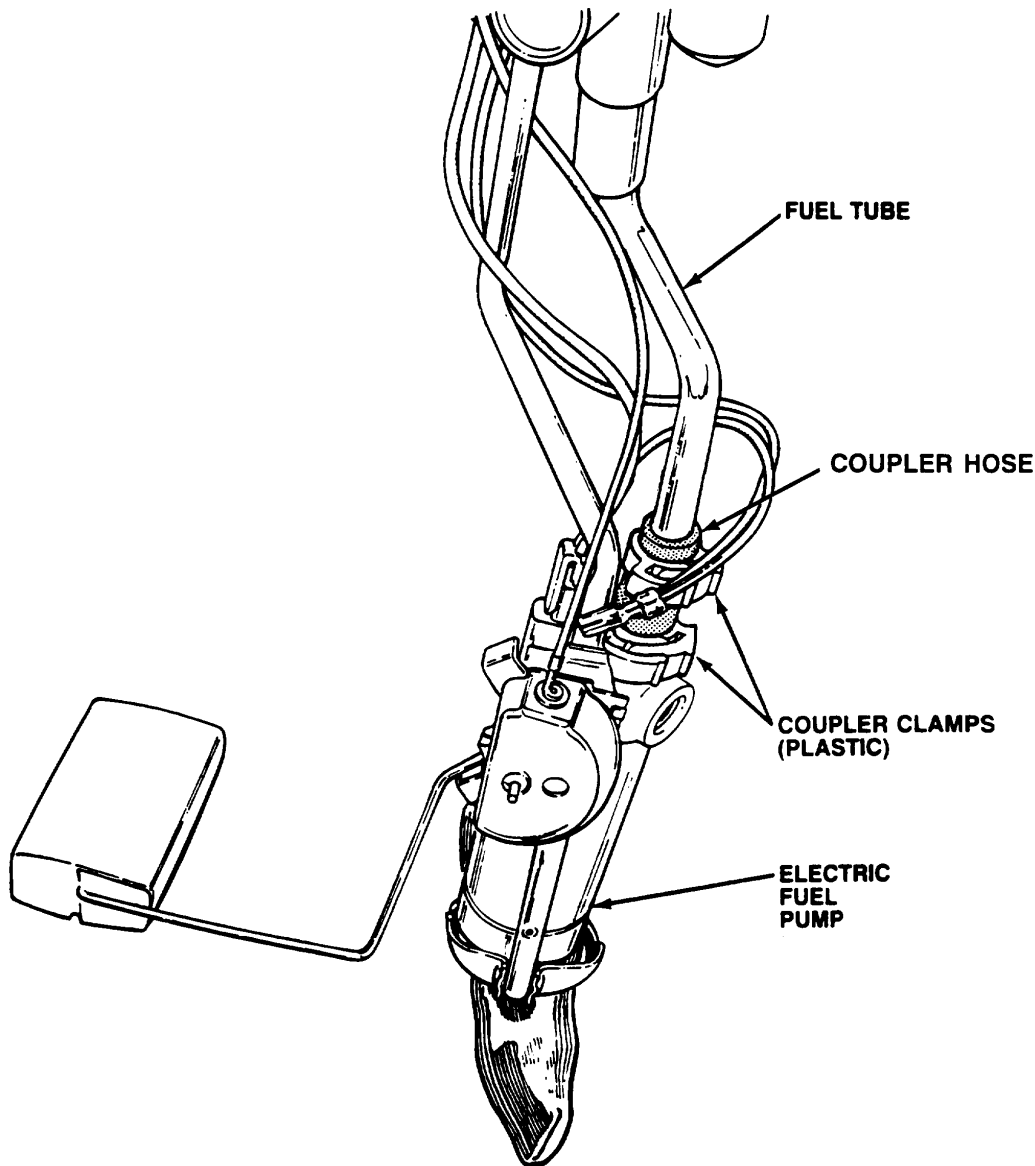


Figure No. 2

General Motors bulletins are intended for use by professional technicians, not a "do-it-yourselfer". They are written to inform those technicians of conditions that may occur on some vehicles, or to provide information that could assist in the proper service of a vehicle. Properly trained technicians have the equipment, tools, safety instructions and know-how to do a job properly and safely. If a condition is described, do not assume that the bulletin applies to your vehicle, or that your vehicle will have that condition. See a General Motors dealer servicing your brand of General Motors vehicle for information on whether your vehicle may benefit from the information.

GM bulletins are intended for use by professional technicians, NOT a "do-it-yourselfer". They are written to inform these technicians of conditions that may occur on some vehicles, or to provide information that could assist in the proper service of a vehicle. Properly trained technicians have the equipment, tools, safety instructions, and know-how to do a job properly and safely. If a condition is described, DO NOT assume that the bulletin applies to your vehicle, or that your vehicle will have that condition. See your GM dealer for information on whether your vehicle may benefit from the information.