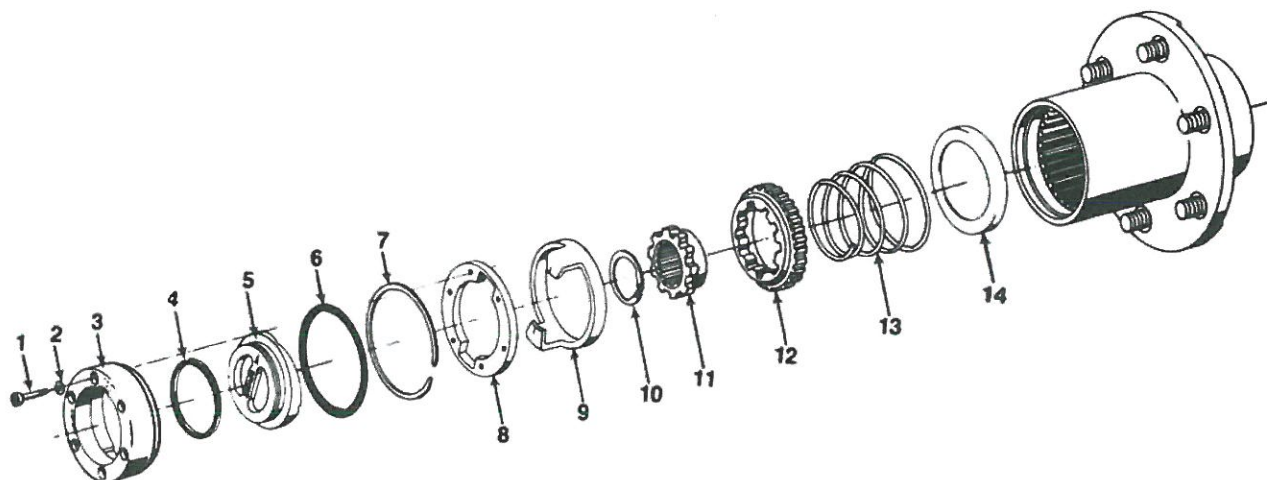


## PARTS IDENTIFICATION

### INTERNAL TYPE - SLIDING TOOTH DESIGN



**Figure 23**

ITEM	QUANTITY	PART NAME
1	6	HUB LOK RETAINER SCREWS
2	6	HUB LOK SCREW WASHERS
3	1	LOCKOUT HUB HOUSING
4	1	ACTUATOR KNOB "O" RING
5	1	ACTUATOR KNOB
6	1	LOCKOUT HUB HOUSING "O" RING
7	1	SNAP RING (HUB)
8	1	RETAINING PLATE
9	1	ACTUATING CAM
10	1	AXLE SHAFT SNAP RING
11	1	INNER CLUTCH RING
12	1	OUTER CLUTCH RING
13	1	PRESSURE SPRING
*14	1	SPRING RETAINING PLATE

\* Model 60 Hub Lok Kit Number 660055 does not use the Spring Retainer Plate. Refer to text in this manual for assembly procedures.

## SERVICE INSTRUCTIONS

In the event it becomes necessary to disassemble the Hub Lok for either inspection or cleaning purposes, it is recommended that parts showing wear should be replaced. Parts #5, #9, #11 and #12 are exposed to wear when the HUB LOK is engaged. Therefore, these parts should be checked carefully during inspection.